

Selborne Chambers riser upgrade works

COUNSEL'S
CHAMBERS
LIMITED

8 July 2024

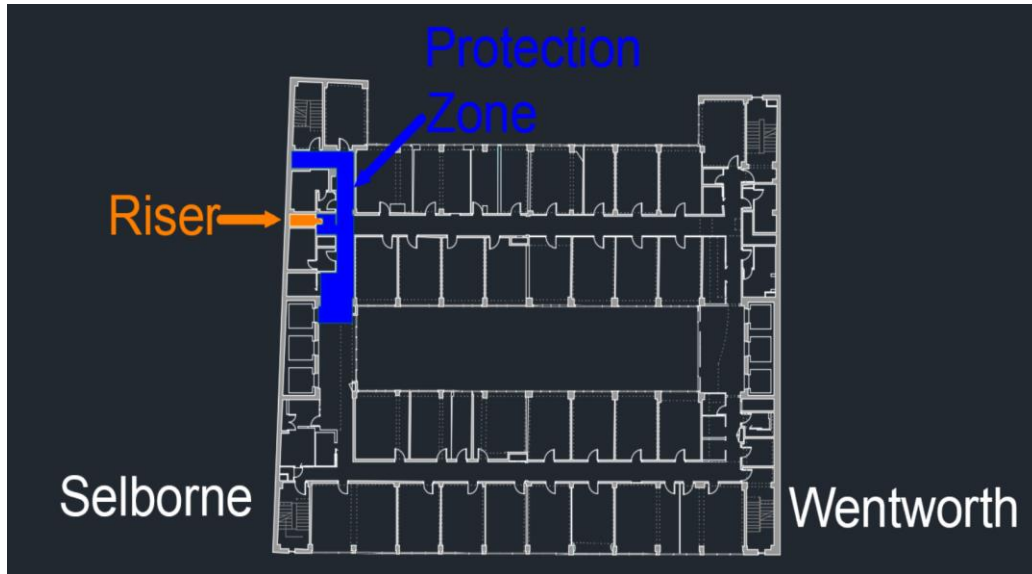
Dear: Shareholders, Tenants & Clerks

I refer to my Circular of [18 March 2024](#) and our recent meetings with Clerks to discuss the Selborne Chambers riser upgrade works.

The proposed works have been approved and CCL is finalising the detailed planning with the Contractor. More information will be available over the coming months, however at this stage, CCL can advise the following.

After hours works will commence in early December, during evenings and on weekends. Whilst this work will be noisy and disruptive, it is necessary to commence work early to reduce the risk of delays.

All Chambers will remain accessible at all times. The work will be confined to the Selborne side of the building and the NSW Bar Association Library; the riser and the corresponding protection zone from Lift #6 to the rear fire stair on a typical floor are shown below.



From **12pm, 20 December 2024**, noise restrictions in the buildings will be lifted, the Selborne riser will be removed from service and the surrounding area protected. **From that time until completion (scheduled for 27 January), the following services will not be available to Shareholders, Tenants & Clerks on the Selborne side of the building:**

- Kitchens.
- Toilets and showers.
- Air conditioning to the Ground Floor Wentworth Chambers.
- Air conditioning to the NSW Bar Association.

While there may be some, brief interruptions to services to enable connection and testing to take place, services in Wentworth Chambers will remain available. Members & Staff who are in Selborne Chambers whilst the work is underway will be required to use kitchens & toilets in Wentworth Chambers or Lockhart Chambers, additional daytime cleaning has been arranged accordingly.

As advised above, the project is scheduled to be completed on 27 January 2025, minor works may be carried out after this time, however this will be restricted to outside of working hours.

Access to Chambers will be available throughout, however it may be necessary in some instances to access Chambers from the Wentworth side of the building at certain times. Other impacts include:

- Noisy and disruptive works throughout the day and evening.

- All artwork, valuables and contents will need to be removed from within the protection zone prior to the after hours works commencing in early December.
- CCL's offices will be closed from mid-day on 20 December 2024 until 8am on 2 January 2025.
- Aside from CCL's Maintenance Staff who will be on site, CCL Staff will be working remotely, consequently there will be no face-to-face IT support available from 12pm 20 December 2024 until 27 January 2025.
- The Floors cleaners ability to clean in Selborne will be affected, Clerks are advised to notify Floor cleaners as soon as possible so that they can make the necessary arrangements.
- CCL is developing plans to temporarily drain condensation from AC units on the Selborne side of the building, however there is a possibility that some AC units from Level 2 and above on the Selborne side of the building may not be able to be operated while the work is underway; CCL will confirm whether these units can be operated and directly contact the individuals affected as soon as possible.
- Lift #6 will be a dedicated builders lift and will not be in service while the work is underway.

For those who are planning to work remotely during the above period, please make and test your remote working arrangements well in advance to avoid problems; Clerks should lodge IT requests to support remote working for Members as early as possible to avoid a last-minute rush. We anticipate that the last date to lodge requests for IT support for remote working will be 13 December.

CCL has also received and provisionally approved over a dozen applications for work in Chambers and on Floors during the Christmas vacation period, there will be a substantial number of trades and projects taking place in the buildings over December and January. **No further applications for work during that period will be accepted.**

Please contact our [Maintenance Team](#) if you have any questions relating to the above information.

Kind Regards,
Debbie George
CEO



Level 1 Selborne Chambers
174 Phillip Street Sydney
NSW 2000 Australia

P: [+61 2 9231 3644](tel:+61292313644) **E:** dgeorge@ccl.com.au **W:** www.ccl.com.au **L:** [linkedin.com](https://www.linkedin.com)

Our office is on the traditional lands of the Gadigal People of the Eora Nation. We acknowledge each of the First Nations Peoples on whose lands we work and live, and pay deep respects to their elders past, present and emerging.

This email (including any attachments) is confidential, may be privileged, may contain commercially valuable information and intended solely for the use of the individual or entity to whom it is addressed.

It may be read, copied and used only by the intended recipient. If you have received it in error, please contact CCL on +61 2 9231 3644 or by email at admin@ccl.com.au, or the Sender immediately by return email, and immediately delete this email. CCL reserves the right to monitor all email communications through its networks. If the content of this email is personal or unconnected with CCL's business, we accept no liability or responsibility for it. You should take full responsibility for virus checking of this email and any attachments. If this email contains personal information (as defined in the Privacy Act Cth as amended) you must at all times comply with the Privacy Act and Australian Privacy Principles in connection with the personal information.